

Look & Feel Sensational styles and spa

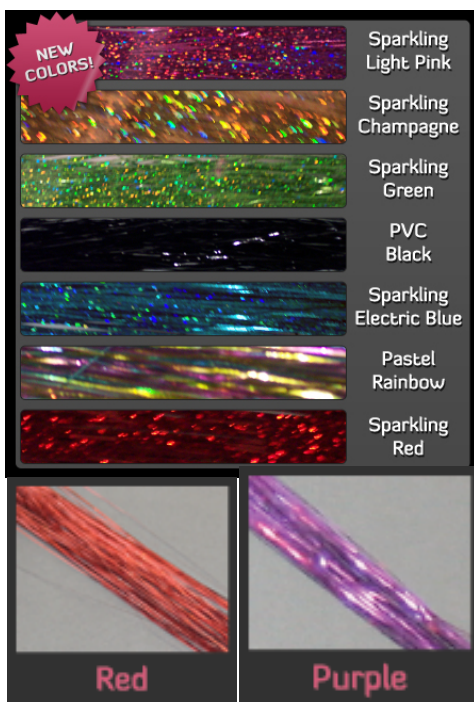
Open
Until 9pm

Avon • 356.9226

Hair Bling/Tinsel
coming soon!

Here are the colors to
choose from!

- Sparkling Light Pink
- Sparkling Champaign
- Sparkling Green
- Sparkling Electric Blue
- Rainbow
- Red
- Purple

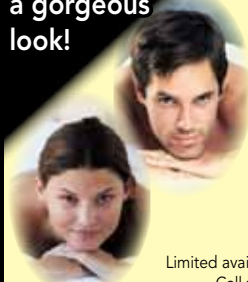


BRIDES!

Schedule your
hair appt. for
a gorgeous
look!

*Pamper you & your
loved one with a*

COUPLES VALENTINE'S MASSAGE



Wednesday, Feb. 15th
Thursday, Feb 9th & 16th
Friday, Feb. 10th
Saturday, Feb. 11th

Limited availability. Mention this ad to receive special prices.
Call today to reserve your time: 320-356-9226

CHOOSE FROM ONE OF OUR 5 PACKAGES!

Relaxation Massage with Glass of Wine, Chocolate & Rose
1/2 Hour \$70 • 1 Hour \$115 • 1-1/2 Hours \$165 • 2 Hours \$195
or Hot Stone Massage with Glass of Wine, Chocolate & Rose
1 Hour \$135



103 North
Avon Ave.,
Avon, MN
320-356-9226

www.sensationalstylesspa.com

Did you know massage can enhance your immunity, increase flexibility and circulation and reduce overall stress!



Happy
From Sensational Styles & Spa Team!!
February is a time for reflect on your
New years resolutions and new beginnings.
Be a part of our Referral Club

Answers for the most common questions about Eyelashes/Mascara

What mascara color is best for me?

A black-brown or dark brown shade flatters most. Black looks best only on deepest brunettes. Navy Blue looks great on dark lashes. Light lashes should use black-brown or brown first, then finish with a coat of navy.

What makes my eyes so sensitive to mascara?

a- Running: If a mascara runs when exposed to moisture its dyes and chemicals can enter the eye and cause irritation. Kiss Me mascara's unique formulation forms a tube around each lash, which prevents it from running.

b- Penetrating: Because conventional mascaras are essentially oil-based paints, and since oil penetrates the skin, most mascaras can bring their impurities to the root of the lash. A build up of these impurities or leaving these mascaras on for too long can trigger irritation or even infection. Also, many mascaras may gradually damage or even destroy contact lenses. The impurities and the oil components may create a film over, or stain, the lens and if not thoroughly cleaned may eventually ruin the lens. Kiss Me mascara coats each lash rather than painting it and it comes off without leaving any harmful tint or residue.

c- Excessive rubbing for removal: If your mascara leaves a tint that requires a lot of rubbing to completely remove, you can irritate the skin around the eye. Remember that the skin around the eye is much more delicate than that of the rest of the face. Kiss Me mascara is removed by very simply washing your face and applying gentle fingertip pressure to the lashes to remove the tubes that were formed.

d- Harsh eye make-up removers: Some make-up removers can irritate the eyes especially after repeated use. This is why it is recommended that women who wear mascara regularly use one that doesn't require a make-up remover. Kiss Me mascara provides the hold of a high performance water-resistant mascara yet only requires water and gentle pressure to come off. Kiss Me mascara's formulation allows it not to run yet still avoid the use of an eye make-up remover. For these reasons, it is a great solution to conventional mascaras for women with sensitive eyes or contact lens wearers. However, as with all cosmetic products, the user must monitor her body's reaction and discontinue using a given product should any irritation occur.

Do I curl before or after applying Kiss Me mascara?

Curling your lashes with a heated eyelash curler will deliver the best results in both look and length of hold. Then apply Kiss Me mascara which will form tubes around the lashes acting like a cast, holding the curl even longer in place. Quickly apply two coats and let it set. This approach will make even short skimpy lashes look wonderful!

Applying eyeliner to the inner side of your lashes...

Many people put eyeliner in the inner side of their lashes. We do not agree with this practice. Although it does create a nice look, bacteria loves the area and you could find yourself with an infection very quickly.

How do lashes grow, and how long does it take?

Contrary to what many people think, eyelashes grow in two or three irregular rows, not a straight line. The fullest growth occurs at the center of the lid. A lash reaches its full length in about ten weeks, and each one lives from three to five months. Like the hairs on your head, there is nothing you can do directly to stimulate growth. The best you can do is enhance what you have.

Why should I curl my lashes?

When the lashes are straight, they tend to curtain the eyes and make them look smaller. When they are swept upward, more of the iris is revealed and your eyes seem larger and more brilliant. Achieving this wide-eyed effect takes exactly thirty seconds. Grip the hairs gently with your eyelash curler, count up to thirty, and release. For a more pronounced curl, release the grip and move to a new position two or three times. Curling is also a good idea for eyeglass wearers, it keeps the lashes from brushing against your lenses.

What can I do about my mascara drying out?

Don't Pump Up! Never, ever pump the wand - this adds air to the mascara container, which will only make your mascara dry out faster.

Should I sleep with my mascara on?

Although Kiss Me mascara's formulation will allow you to sleep with your mascara on without it flaking, running or smudging, it is not recommended. Leaving any mascara on for extended periods of time may cause your lashes to dry out and break. Kiss Me mascara is easy to remove before bedtime, so take advantage of it!

How should I apply mascara?

Apply mascara the base of the lashes to the top in an upward motion. Apply mascara to the top of the bottom lashes in a side to side motion.

Should I use waterproof mascara?

In general, it is best to avoid frequent use of waterproof mascara because they have a tendency to make the hair follicles dry out

Winter's Essential Vitamin Treatment

Product Classification:

This triple performing 8% AHA (Alpha Hydroxy Acid) treatment with Glycolic Acid, Vitamins A and E, and active stabilized Vitamin C accelerates exfoliation to reveal firmer, more radiant skin with less visible lines and wrinkles. Through a crème deliverance system of an 8% Glycolic Acid formula, dead skin cells are gently swept away, rendering skin healthy and vibrant. Glycolic Acid is a natural ingredient found in sugar cane. Potent biological antioxidants help protect skin from environmental damage and help repair and reverse the visible signs of aging, including uneven skin texture and discoloration.

Method of Use:

For normal to combination skin types, apply to face and throat after cleansing and toning both morning and evening. Can be used over Bio-A Concentrate and Pharma-C Serum for additional reparative benefits.

Benefits:

Glycolic Acid (AHA) is used for its premium exfoliation benefits. This ingredient penetrates to remove superficial free radicals and toxins, as well as dead skin cells.

Magnesium Ascorbyl Phosphate (Stabilized Vitamin C) is an age-repairing antioxidant that improves elasticity and encourages natural collagen production.

Tocopherol (Vitamin E) is an age-repairing antioxidant that promotes the regeneration of damaged and aging skin.



Education -we learn more to help you look your best.

Our mission is to provide the finest in products for hair, skin, home and body. A variety of products that benefit mind and soul and help to bring a little bit of luxury into the everyday.

Keep a look out on Face book & Our Website to see all of our Updates!



Come see us

[@www.SensationalStylesSpa.com](http://www.SensationalStylesSpa.com)

320-356-9226 First Quarter Newsletter 2012

AvonsSpa@me.com

Referrals are the cornerstone of our business and are both welcome and appreciated!